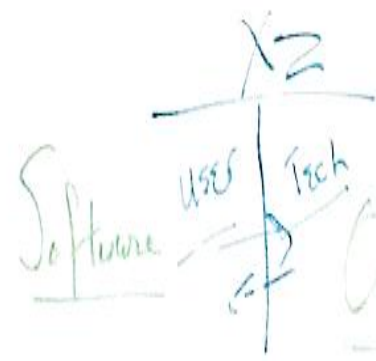


Amesbury School District Aspen/X2 Update

**Amesbury School Information
System**

October 1, 2013

Hardware (Age)
Teacher @ CES, MS (Ari)



WorkFlows
Overarching - Shared

Job Description

EARTH SAIP

Power
MSO

MTRS

• Speed (Lanals)

Instructional

School Wild →
Prossant (District level)
SAB, PAS

Comm. Mapping (X2)

Teacher →
Administration

X2 (Success)

Networks

Blackboard

DSS/View

Security

Antivirus Software

Inventory (School Data)

Munis
ADP

Mail Server
WEB Filter
Archive MAIL

Backup Exec

Firewall



Another Business Metrics
→ Rent management
Data Warehousing → Analytics

SIF

V.P.
E

176k Allstate fees
ARZ

- Post Course Analysis
- Encouraging, media
- Stakeholder meetings
- Tech Meeting

Security Software

My Learning

Aspen/X2 Overview

- Aspen/X2 is a Fully Integrated School Information System
 - All Student Data is stored in Aspen/X2
 - Special Education Data is stored in Aspen/X2
 - Aspen/X2 also manages Staff/Employee Data
 - Aspen/X2 is Certified for use by the MA Department of Elementary and Secondary Education
 - Aspen/X2 is NOT a Beta Product

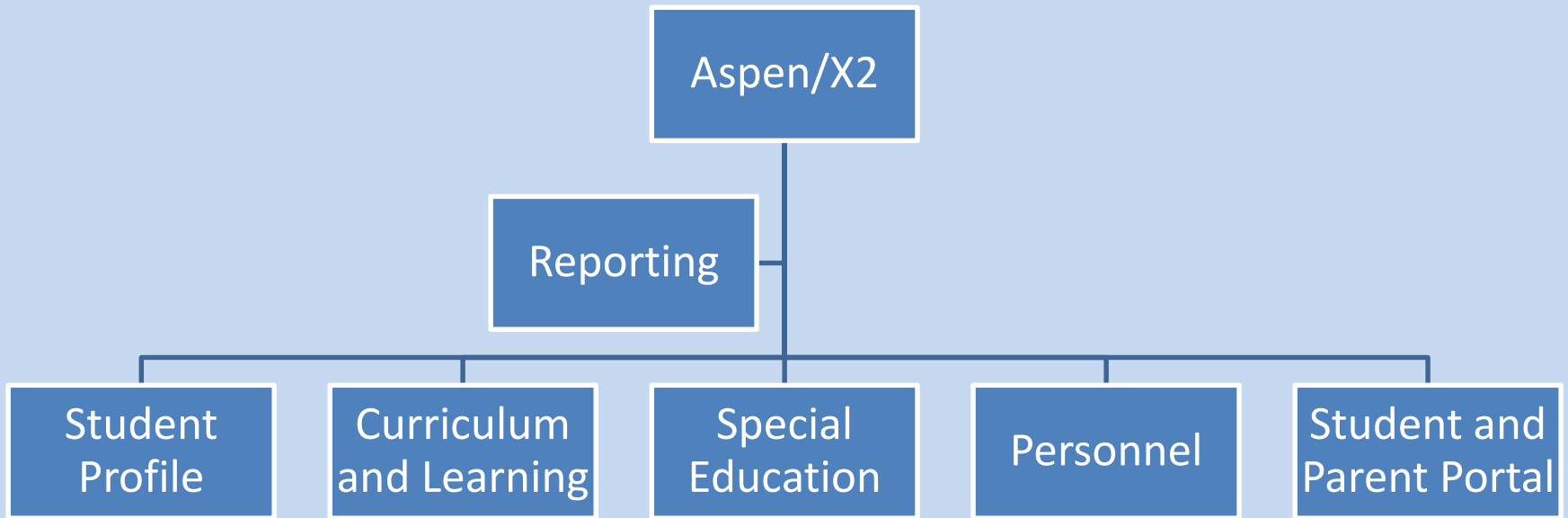
Aspen/X2 Support

- Amesbury is now actively involved with the Aspen/X2 usergroup exchanging ideas, questions and concerns with the product
- Amesbury MIS Staff are attending Aspen/X2 Users Conferences which provides training and tools which assist with system integration and management
- Amesbury has a Customer Advocate assigned by Follett Software that works directly with the District to resolve any problems that arise

Aspen/X2 Modules

- Aspen/X2 has modules that are Integrated which allows users to access all aspects of Student Information from a single login
- Aspen/X2 Modules that are in use
 - Student Profile Information
 - Special Education
 - Personnel
 - Curriculum and Learning
 - State and other Reporting
 - Student and Parent Portals

Aspen/X2 Modules



Aspen/X2 Special Education

- Aspen/X2 Special Education Upgrade
 - Utatics was migrated to eSPED
 - eSPED was migrated to Aspen/X2
 - This Data Conversion was not validated when the conversion was completed with both upgrades
 - Errors were carried over in the conversion causing time to be spent correcting errors after the conversion
 - Training was lacking after the conversion
 - Led to frustration of users due to data errors and training issues

Aspen/X2 Special Education

- Aspen/X2 Special Education Upgrade
 - Data Errors have been successfully corrected
 - Special Education Staff has been provided training with Aspen/X2 and training continues
 - Special Education Staff is involved with the Aspen/X2 Special Education usergroup
 - Exchange ideas with the group
 - Receive assistance with problems and questions regarding Special Education Module

Aspen/X2 Personnel

- Aspen/X2 Personnel manages Personnel Information
 - Employee Profile Information
 - Employee Salaries
 - Employee Accruals
 - Seniority
 - Teaching Schedule
 - Professional Status / License Information

Aspen/X2 Curriculum and Learning

- Aspen/X2 Curriculum and Learning
 - Curriculum maps are digitally shared and integrated into classrooms
 - Built to align standards to curriculum
 - Gradebook immediately updates class grades and shares information with students, parents and other school and district members.
 - Student and Parent Portals allow access to grades, course materials and event schedules outside of the classroom.

Aspen/X2 Reporting

- Aspen/X2 Reporting allows Amesbury to compile, validate and submit timely and accurate reports to the DESE electronically through their Portal
 - SIMS – Student Information
 - SCS – Student Course Schedule
 - EPIMS – Employee Information

Aspen/X2 Reporting

- SIMS – Student Information Management System
- Reports are provided three times per year
 - October 1st, March 1st and End of Year
 - Allows the DESE to collect and analyze accurate and comprehensive information, to meet federal and state reporting requirements, and to inform policy and programmatic decisions.
 - 52 Distinct Data Elements are reported for each student!

Aspen/X2 Reporting

- SCS – Student Course Schedule
- Reports are provided two times per year
 - October 1st and End of Year
 - Collect student course, course completion, and mark/grade information to meet federal and state reporting requirements in a timely manner
 - Provides the ESE with course information, teacher assignments and students enrolled in all courses

Aspen/X2 Reporting

- EPIMS – Employee Personnel Management Information System
- Reports are provided two times per year
 - October 1st and End of Year
 - Demographic, data and work assignment information on educators to comply fully with the No Child Left Behind Act
 - Used to identify high need areas and assist districts with their recruiting efforts
 - 27 demographic and 17 work assignment data elements per employee!

Aspen/X2 Student / Parent Portal

- “The Aspen Student Information Management System gives teachers, parents and students an arena to communicate openly. Families can use the Family Portal to view demographic data, academic progress, daily attendance records, schedules, assignments and grades for their Amesbury Middle and High School children”
- Portal will be open starting October 2nd

Hardware (Age)
Teacher @ CES, MS (Ari)



WorkFlows
Overarching - Shared

Job Description

EARTH SAIP

Power
MSO

MTRS

• Speed (Lanals)

Instructional

Schol Wild
Prossort (District level)
SAB, PAS

Comm. Mapping (X2)

Teacher

X2 (Successor)

Networks

Blackboard

DSS/View

Security

Mail Server
WEB Filter
Archive MAIL

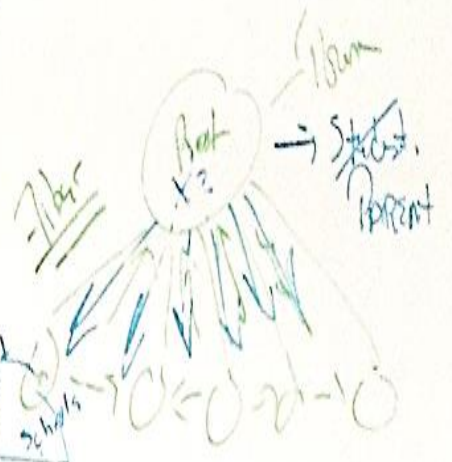
Backup Exec

Firewall

Antivirus Software

Inventory (School Data)

Munis
ADP



SIF

- Post Course Analysis
- Encouraging media
- Stakeholder meetings
- Tech Meeting

176k Allstate fees
ARZ

Another Business meeting
Budget management
Data Warehousing → Alingpa!